



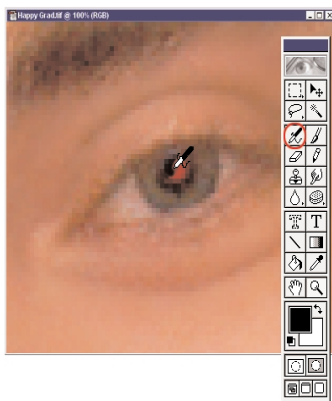
Step 1

First, let's open an image with the dreaded red eye problem. This particular graduation shot not only has a red eye problem, but also a little "tassel fly-away" issue. We'll take care of both quickly and easily by using Photoshop LE's pressure-sensitive brush tools and, of course, a Wacom tablet.



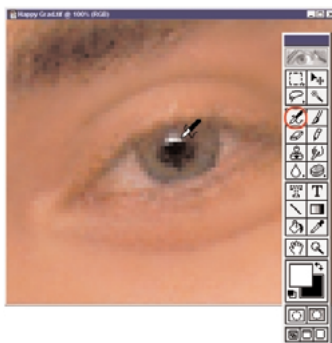
Step 2

To get the red out, select a small Airbrush and 100% black from the color palette. Turn on "Opacity" in the "Options" palette to take advantage of the Wacom pen's pressure-sensitivity, then lightly airbrush the red out.



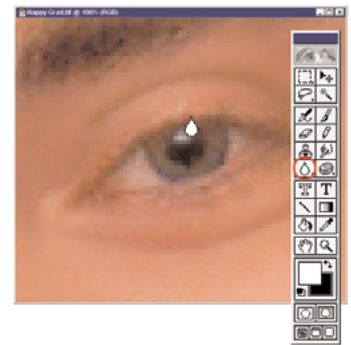
Step 3

Painting the red out of his retina flattened his eye a bit, so now let's put that "twinkle" back into his eyes. Choose a smaller airbrush (I'm using the smallest one in the Brushes palette) and white from the color palette and lightly paint a little glint of light back into his eyes.



Step 4

Finish by lightly softening the highlight using Photoshop LE's Blur tool. Again, turn on "Opacity" in the "Options" palette to make sure you get maximum control of the Blur tool and don't overdo it.



Step 5

Next, let's take care of this "bad tassel-day" by using Photoshop LE's Stamp tool.

First, I'll set the anchor point (the place in the image that the Stamp tool is going to copy pixels from) by holding down the "Alt" key ("Command" key on the Mac) and clicking.



Then, I simply paint away the "bad" tassel strands, using the Wacom pen's pressure-sensitivity to smoothly blend in the background.



Step 6

Much better! Ready to be e-mailed to the girlfriend and grandparents!

